

Q S X P E

ZS2PE

FREQUENCIES:

Bulletin	—	3640 Khz
s20 National Call	—	145,5
s22 2nd Simplex	—	145,55
r2 P.E. Rep'tr	—	145,05/65
r8 Ght. Rep'tr	—	145,20/80



*Port Elizabeth Branch of the
South African Radio League*

P.O.Box 462, Port Elizabeth. 6000.

14 MAR 1978

Minutes of the monthly meeting of the PE Branch of the SARL held
on 17th February 1978.

PRESENT: 17 members and 1 visitor.

APOLOGIES: ZS2GF, ZS2KX, ZS2CZ, ZS2LO, ZS2AE, ZS2AB.

MINUTES: These had been published in QSX. ZS2KT proposed and ZS2BK seconded adoption.

ARISING: ZS2KT submitted a list of Uitenhage members (8) and Despatch (1).

FINANCE: The Treasurer submitted a statement showing R47,92 spent.

CORRESP: Nil.

- GENERAL:
- 1). Bert ZS2FA stated that his logic classes would be ending shortly with the last class on 22nd February. The general turnout had been good with a start of 30 students which had reduced to about 24, but of these, 16 had attended all classes regularly. Certain of the students had requested a certificate after completion of the lectures, which was duly printed and Bert was prepared to sign them, but under duress, as he claimed that no exam had been written. Bert further stated that a letter of appreciation be sent to Dr. Gough of UPE thanking him for his assistance.
Al ZS2U proposed a vote of thanks to Bert which was seconded by ZS2RS.
 - 2). Dick ZS2RS requested that any incomplete frequency counters which had been undertaken as a branch project, should be reported to him.
 - 3). A DF hunt will be held as usual with the difference that a continuous carrier or CW transmission would replace the old system of 3 mins transmission every 10 mins.
 - 4). Currently only 6 Branch DF sets can be accounted for. ZS2RS appealed to any member with a set in his possession to notify ZS2U.
 - 5). A proposal for an outing incorporating a DF hunt was put to the meeting, and was well received. Date and venue to be announced in a future bulletin.
 - 6). Proposed Kareedouw repeater. ZS2BK was busy corresponding with the authorities and would keep the Branch informed of progress. The repeater would be licenced by the Branch.
 - 7). The Chairman once again appealed to "thumpers" to halt their activities.
 - 8). ZS2BK enquired about the beacon (144,910). At present at the gth of ZS2RS. Members generally agreed that it should be installed in the city central area. A site in park drive was at present available.
 - 9). A box of assorted Xtals, valves etc donated by Van ZS2Y was on display and R10 was collected for Branch funds.
 - 10). The Chairman was elected as delegate for the AGM. proposed by Van ZS2Y, seconded by ZS2U. Alternate delegate Al ZS2U proposed by ZS2RS seconded by ZS2RR. A proposal by Van ZS2Y seconded by ZS2RR that minutes of proposals and nominations for the AGM not be published in QSX..
The business of AGM motions was then attended to.

There being no further business, the meeting closed at 22h30.

sgd.
R.W. Schenborn ZS2RS
CHAIRMAN.

sgd.
S.B. Staples ZS2BE
Act. SECRETARY.

The next meeting of the P.E. Branch takes place on Friday 17 March at 8pm. The venue as usual will be the YMCA Havelock Street. Please make a special effort to attend. Our guest speakers will be messrs. Dave Allen and Gerry van Niekerk. Members may recall that it was these two gentlemen who discovered the wrecks of the Sacramento and Doddington. They will show a selection of slides and also a few samples of what they have salvaged to date. The evening promises to be interesting and most informative.

.....

WANTED.

Tunable receiver. FM. Approx. 30-50 M/cs. Any offers. Dudley ZS2AW.
10 Cromwell Street
Grahamstown.

.....

CONGRATULATIONS.

Congratulations to Hans ZR2AX whose XYL presented him with a son on Sunday last.

Andre ZS2BK and family have been holidaying at Plettenberg Bay for the last three weeks. When he first arrived there he could sometimes be heard on "2" but of late there is no sign of him. We would like to think he is enjoying a well earned rest and can't even summon the energy to activate the on/off switch. They are due back this weekend, 11"-12th.

.....

The interference experienced on the Lady's Slipper repeater has increased of late. A cavity filter will be inserted in the receiver line soon in an effort to improve matters.

.....

Long range VHF tests will soon be made from the top of Cockscomb. This site is about 6000 ft above sea level (3times higher than Lady's Slipper) and could produce some interesting results. Unfortunately these tests will have to be made on a weekday, probably in the late afternoon. Anyone who is able to assist by being mobile, preferably inland, should please contact Dick ZS2RS for further details.

.....

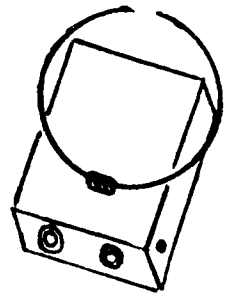
Cyril ZS2KX and XYL Betty ZS2LO are moving QTH soon. Perhaps an antenna will be possible at the new QTH.

.....



"I'm not
smoking! ...
If you must
know, I've
filled it with
gin and I'm
sucking it!"

D. f. news

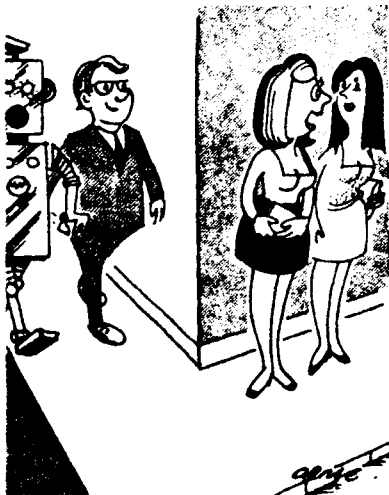


A D.F hunt will be held on Sunday 19 March at 2pm. As usual the hounds will set out from the corner of Kabega Road and Walker Drive.
The fox will be Colin ZS2AO. Tea will be had as usual after the hunt at the Graydawn Bird Park tea room.

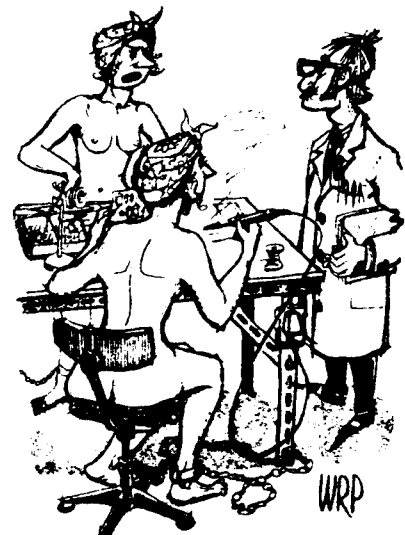
Current state of competition.

Al	ZS2U	12
Wolf	ZS2WG	9
Bert	ZS2EA	6
Selwyn	ZR2BE	6
Dieter	ZR2BK	4
Franz	ZS2O89	4

After the first hunt, using continuous transmissions, it would appear that everyone is in favour of it. It does definitely save time and makes for a more exciting hunt.

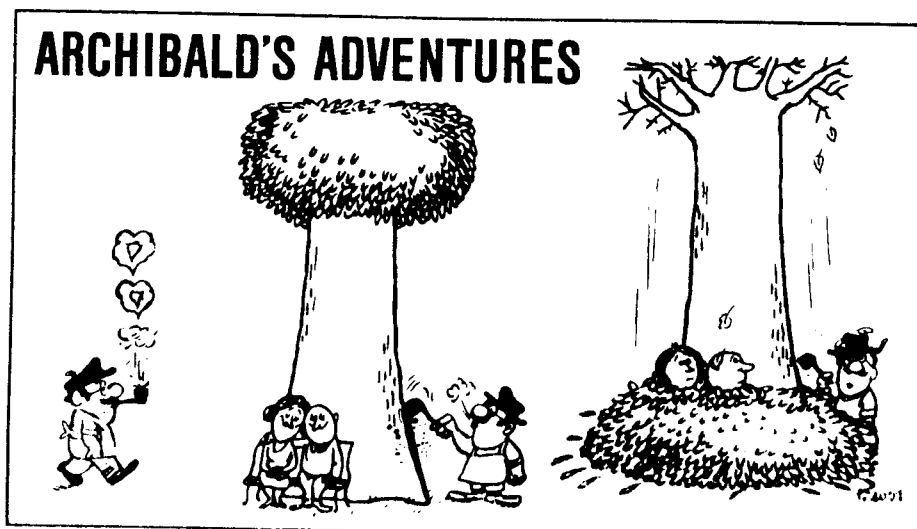


"He said the fellow he's bringing for you is a real switched-on type!"



"So all these anti-static precautions of yours are strictly down to Advanced Technology eh! Mr. Poskitt?"

ARCHIBALD'S ADVENTURES



THOSE LOCATING LUGS

By R. Desmond

Drilling an additional panel hole for a potentiometer or rotary switch can result in a considerable increase in equipment reliability

WHEN YOU BUY A POTENTIOMETER OR ROTARY switch you will almost invariably find that it has a locating lug projecting forward at the front. The purpose of this locating lug is to ensure that the potentiometer or switch cannot be rotated if there is any slackening of the bush mounting nut securing it to the panel on which it is fitted. A ham-handed person operating a loosely secured control can turn its whole body, thereby twisting the wiring which connects to the control and possibly causing damage to components connected to it. Rotary switches and potentiometers fitted with switches are particularly susceptible to a fate of this nature.

LOCATING LUG

The problem can be overcome by drilling a small hole in the panel through which the locating lug of the potentiometer or rotary switch can pass. See Fig. 1.

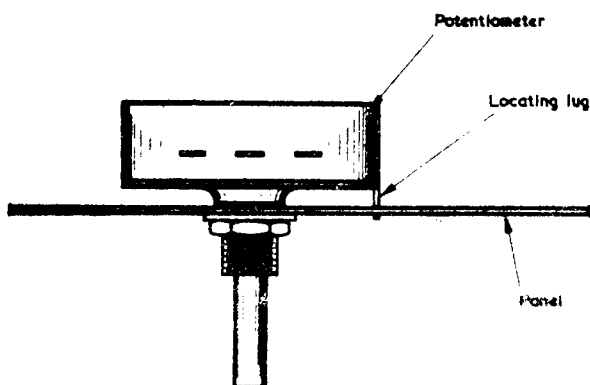


Fig. 1. When fitting a potentiometer or rotary switch the locating lug should pass through a hole in the panel

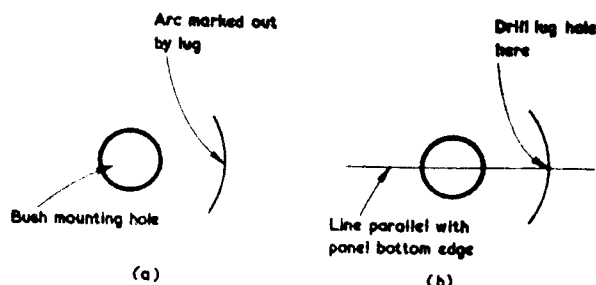


Fig. 2(a) Marking out an arc on the panel with the aid of the locating lug
(b) If desired, the lug and mounting hole centres can be on a horizontal line

The hole diameter needs to be equal to or just slightly larger than the width of the lug. When the control is mounted it will then be impossible to accidentally rotate its body if the bush mounting nut works loose. The provision of panel holes or slots to take the locating lugs of rotary controls is common practice in manufactured electronic equipment.

The distance between the bush centre and the locating lug varies with different makes and models of potentiometer and rotary switch, whereupon it is necessary to mark out the locating lug hole on the panel with the aid of the control itself.

First, drill out the bush hole for the control, this in most instances being $\frac{1}{8}$ in. in diameter. Then remove the mounting nut and shake-proof washer from the control, pass its bush through the hole just drilled and position it so that its tags appear in the approximate position desired. Next, push the control forward so that its locating lug is against the panel surface and turn its body through about 20° of rotation in both directions.

MARKED OUT ARC

Remove the control and examine the panel. The locating lug will have marked out an arc as indicated in Fig. 2(a), this having just the correct radius from the centre of the $\frac{1}{8}$ in. bush mounting hole. The locating lug hole can be drilled at any point along this arc. For reasons of neatness it will frequently be desirable for the locating lug hole to be on a horizontal line which also passes through the centre of the bush mounting hole, and this is particularly the case with potentiometers, whose tags will then project accurately above or below the potentiometer body. All that is then necessary is to draw a line parallel with the panel bottom or top edge through the bush mounting hole centre and the locating lug arc, as indicated in Fig. 2(b). The locating lug hole is then drilled at the point where the two lines intersect.

It is preferable that the rear surface of the panel be marked out since the arc will not then be visible from the front and will in any case be covered by the component body itself. If the marking out has to be carried out on the front of the panel (because, say, it is difficult to drill the hole from the rear) the arc should be marked out as lightly as possible, so that it may be later cleaned off. Alternatively, it can be covered by the knob which is fitted to the control.

RADIO & ELECTRONICS CONSTRUCTOR

Hobbes Jan 26 line - 2 July?